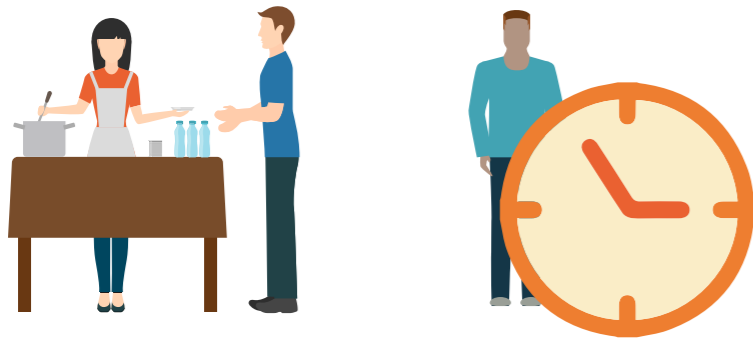


Registered Charities reported average number of volunteers and volunteer hours year on year

Calendar years from 1 January to 31 December



Average number of volunteers per week

Average of all volunteer hours per week

| Year | Average number of volunteers per week | Average of all volunteer hours per week |
|------|---------------------------------------|---|
| 2010 | 462,179 | 1,560,776 |
| 2011 | 475,885 | 1,984,424 |
| 2012 | 415,312 | 1,650,006 |
| 2013 | 403,955 | 1,762,303 |
| 2014 | 459,775 | 2,648,923 |
| 2015 | 495,635 | 2,860,838 |
| 2016 | 301,241 | 1,577,226 |
| 2017 | 230,308 | 1,452,000 |
| 2018 | 233,396 | 1,469,634 |
| 2019 | 223,619 | 1,513,480 |

Data used in "Registered Charities reported average number of volunteers and volunteers hours year on year" sourced from reporting by calendar year. Data for the year 2020 is not complete as not all charities have been required to file by this date (filing due 6 months after financial end of year).

Data used in "Top five charities", "volunteers and volunteer hours per reporting tier" and "volunteers numbers within each main sector" sourced from the most recent annual return filed with Charities Services by registered charities as at 11 May 2021.

Top five charities with highest numbers of volunteers per week (average)



1 PLAYCENTRE AOTEAROA (Group registration)

| Registration number | Volunteers per week | Hours per week | Main sector name | Areas of operation |
|---------------------|---------------------|----------------|-----------------------------|--------------------|
| CC55368 | 9,000 | 36,000 | Education/training/research | Nationwide |

2 ST JOHN (Group registration)

| Registration number | Volunteers per week | Hours per week | Main sector name | Areas of operation |
|---------------------|---------------------|----------------|------------------|--------------------|
| CC35255 | 8,480 | 74,251 | Health | Nationwide |

3 SPCA NEW ZEALAND (Group registration)

| Registration number | Volunteers per week | Hours per week | Main sector name | Areas of operation |
|---------------------|---------------------|----------------|----------------------------|--------------------|
| CC56833 | 4,950 | 49,000 | Care/protection of animals | Nationwide |

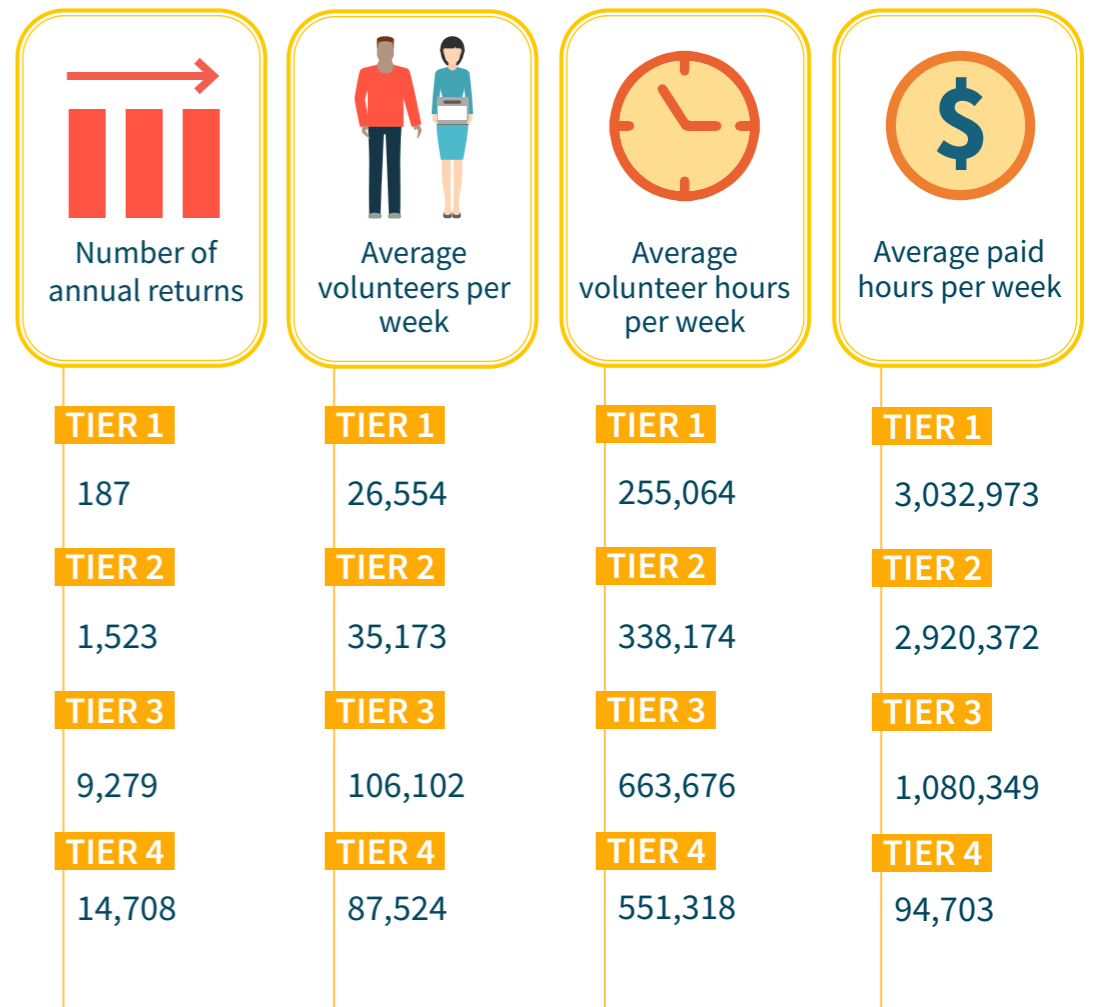
4 THE SALVATION ARMY NEW ZEALAND GROUP (Group registration)

| Registration number | Volunteers per week | Hours per week | Main sector name | Areas of operation |
|---------------------|---------------------|----------------|----------------------|---|
| CC37322 | 4,821 | 19,019 | Religious activities | Nationwide, Oceania, Fiji, Samoa, Tonga |

5 ARISE CHURCH

| Registration number | Volunteers per week | Hours per week | Main sector name | Areas of operation |
|---------------------|---------------------|----------------|----------------------|--------------------|
| CC30589 | 2,862 | 16,688 | Religious activities | Nationwide |

Volunteers and volunteer hours per reporting tier



Volunteer numbers within each main sector

